

2017/18 OVERALL READINESS RESULTS

(n= 1449)

2017 Kindergarten Readiness Snapshot Participation					
District	School	Teachers	Assessments Completed	Assessments Started	Percent Completed
Bella Vista	Bella Vista	2	31	32	96.9%
Black Butte	Black Butte	1	9	25	36.0%
Cascade	Meadow Lane	6	114	114	100.0%
Castle Rock	Castle Rock	1	8	8	100.0%
Columbia	Columbia	2	45	46	97.8%
Cottonwood	North Cottonwood	4	111	111	100.0%
Enterprise	Alta Mesa	0	0	0	
	Boulder Creek	0	0	0	
	Lassen View	3	64	65	98.5%
	Mistletoe	0	0	0	
	Rother	0	0	0	
	Shasta Meadows	5	81	89	91.0%
	TOTAL:	7	463		
French Gulch/Whiskeytown	French Gulch/Whiskeytown	1	5	5	100.0%
Fall River	Burney	2	53	54	98.1%
	Fall River	2	33	33	100.0%
	TOTAL:	4	86		
Gateway	Buckeye	1	33	33	100.0%
	GAPS	1	17	18	94.4%
	Grand Oaks	3	40	41	97.6%
	Shasta Lake	3	72	75	96.0%
	TOTAL:	8	162		
Grant	Grant	3	69	69	100.0%
Happy Valley	Happy Valley	3	49	49	100.0%
Igo-Ono-Platina	Igo-Ono-Platina	1	2	2	100.0%
Junction	Junction	2	37	37	100.0%
Millville	Millville	1	44	44	100.0%
Mountain Union	Montgomery Creek	1	8	8	100.0%
North Cow Creek	North Cow Creek	2	38	38	100.0%
Oak Run	Oak Run	1	10	11	90.9%
Pacheco	Prairie	3	74	76	97.4%
Redding	Bonny View	2	49	49	100.0%
	Cypress	2	31	31	100.0%
	Juniper	1	15	15	100.0%
	Manzanita	4	79	93	84.9%
	Monarch Learning Center	1	11	12	91.7%
	Stellar Charter	1	15	15	100.0%
	Sycamore	1	19	19	100.0%
	Turtle Bay	4	102	102	100.0%
	TOTAL:	16	321		
SCOE	Chrysalis Charter School	1	18	18	100.0%
Redding STEM Academy	Redding STEM Academy	1	35	35	100.0%
Shasta Union	Shasta Union	2	28	29	96.6%
Whitmore	Whitmore	1	0	1	0.0%
SHASTA COUNTY TOTAL:		75	1,449	1502	96.2%

Shasta County KRS Participation Year over Year

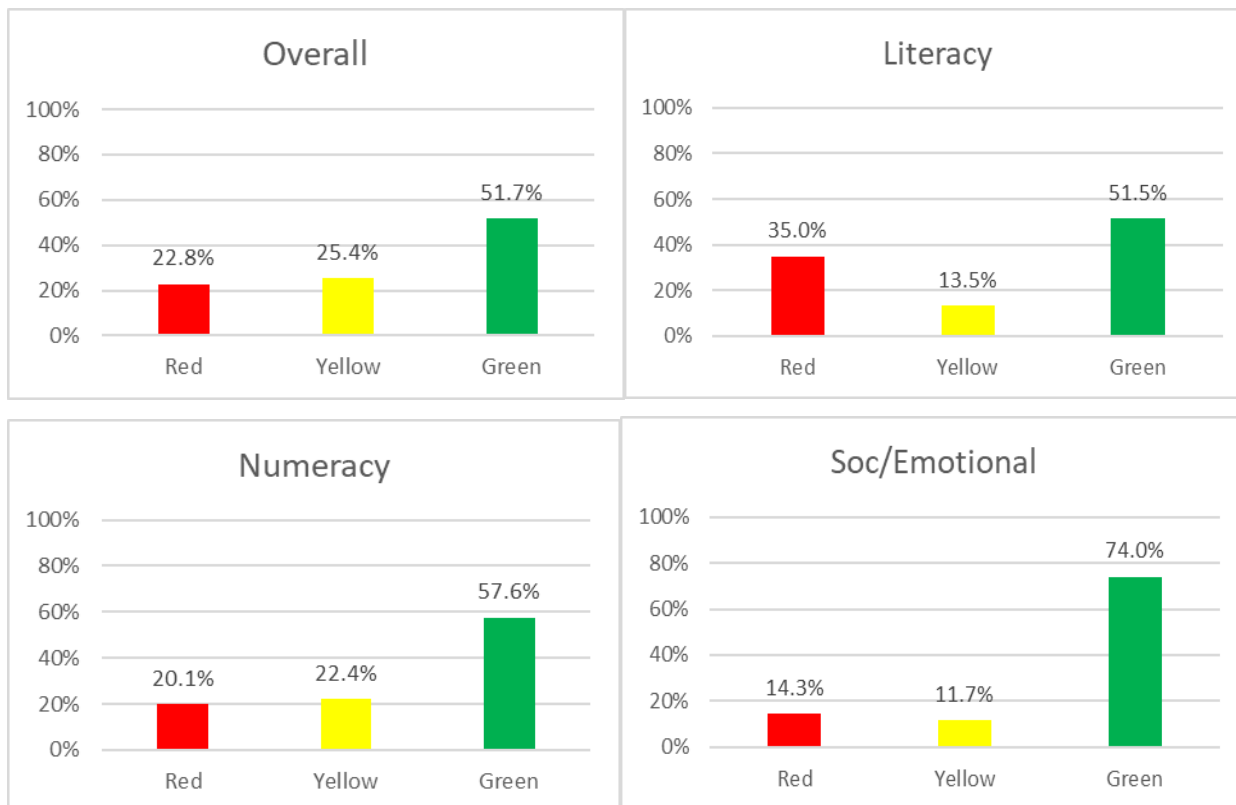
District	School	2015		2016		2017	
		Teachers	Completed Assessments	Teachers	Completed Assessments	Teachers	Completed Assessments
Bella Vista	Bella Vista	2	34	2	27	2	31
Black Butte	Black Butte	1	24	1	25	1	9
Cascade	Meadowlane	4	79	4	84	6	114
Castle Rock	Castle Rock	1	7	1	6	1	8
Chrysalis Charter	Chrysalis Charter			1	18	1	18
Columbia	Columbia	3	65	4	95	2	45
Cottonwood	North Cottonwood	4	93	3	75	4	111
Enterprise	Lassen View	3	62	3	71	3	64
	Shasta Meadows	3	58	3	59	5	81
French Gulch/ Whiskeytown	French Gulch/ Whiskeytown	1	5	1	3	1	5
Fall River	Burney	2	44	2	51	2	53
	Fall River	2	47	2	40	2	33
Gateway	Buckeye	3	79	2	56	1	33
	Grand Oaks	3	40	2	29	1	17
	Rocky Point Charter	2	14	0	0	3	40
	Shasta Lake	2	38	3	48	3	72
Grant	Grant	3	63	3	69	3	69
Happy Valley	Happy Valley	3	50	2	43	3	49
Igo-Ono-Platina	Igo-Ono-Platina	-	-	0	0	1	2
Indian Springs	Indian Springs	1	5	1	2	0	0
Junction	Junction	2	26	2	32	2	37
Millville	Millville	1	20	1	29	1	44
Mountain Union	Montgomery Creek	1	14	1	9	1	8
North Cow Creek	North Cow Creek	2	22	2	31	2	38
Oak Run	Oak Run	1	16	1	8	1	10
Pacheco	Prairie	3	65	3	62	3	74
St Joseph	St Joseph	1	0	0	0	0	0
Redding	Bonny View	2	31	2	60	2	49
	Cypress	2	32	2	42	2	31
	Juniper	1	24	1	21	1	15
	Manzanita	4	102	5	106	4	79
	Monarch Learning Center	1	12	1	5	1	11
	Stellar Charter	1	9	1	12	1	15
	Sycamore	2	25	2	25	1	19
	Turtle Bay	5	86	4	87	4	102
Redding STEM Academy	Redding STEM Academy	2	36	1	24	1	35
Shasta Union	Shasta Union	2	20	1	19	2	28
Whitmore	Whitmore	0	0	1	2	1	0
GRAND TOTALS:		76	1,347	71	1,375	75	1,449
		2015		2016		2017	

Other Counties Participating in KRS

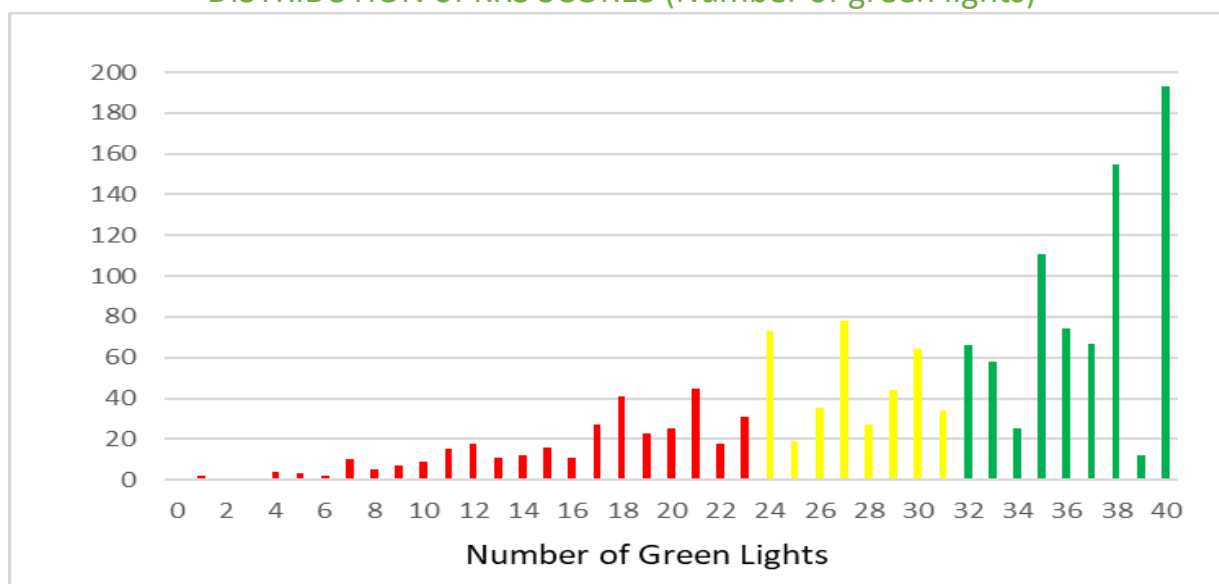
Trinity	Burnt Ranch Elementary	1	11	11	100.0%
	Hayfork Elementary	1	14	19	73.7%
Glenn	Mill Street Elementary - Orland	1	19	19	100.0%
	Princeton Elementary	1	8	9	88.9%
	Hamilton/ Glenn	3	54	54	100.0%
Modoc	Tulelake Elementary	1	15	15	100.0%
	Surprise Valley Elementary	1	11	11	100.0%
	Alturas Elementary	1	14	16	87.5%
		10	146	154	94.8%

OVERALL SHASTA COUNTY RESULTS

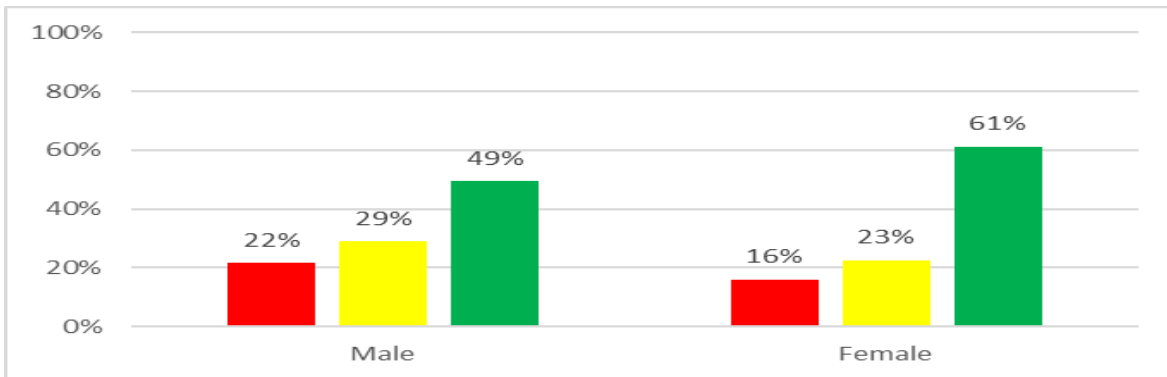
(n= 1449)



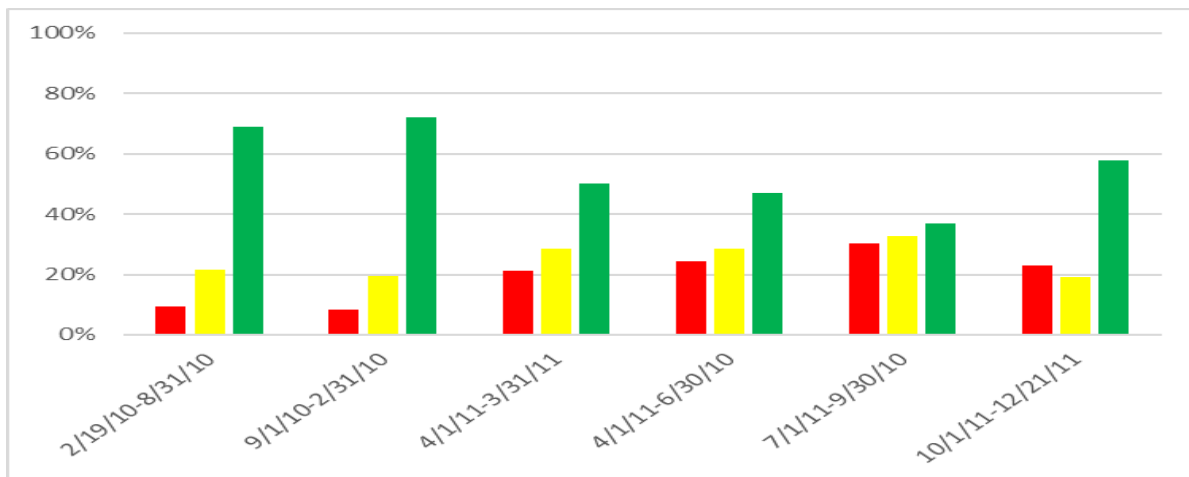
DISTRIBUTION of KRS SCORES (Number of green lights)



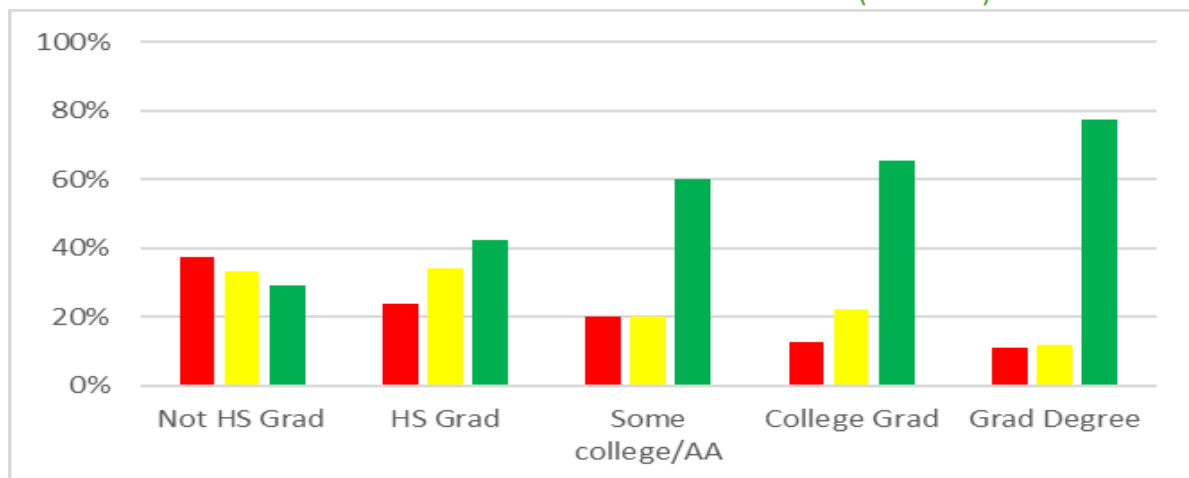
READINESS BY GENDER (n=1449)



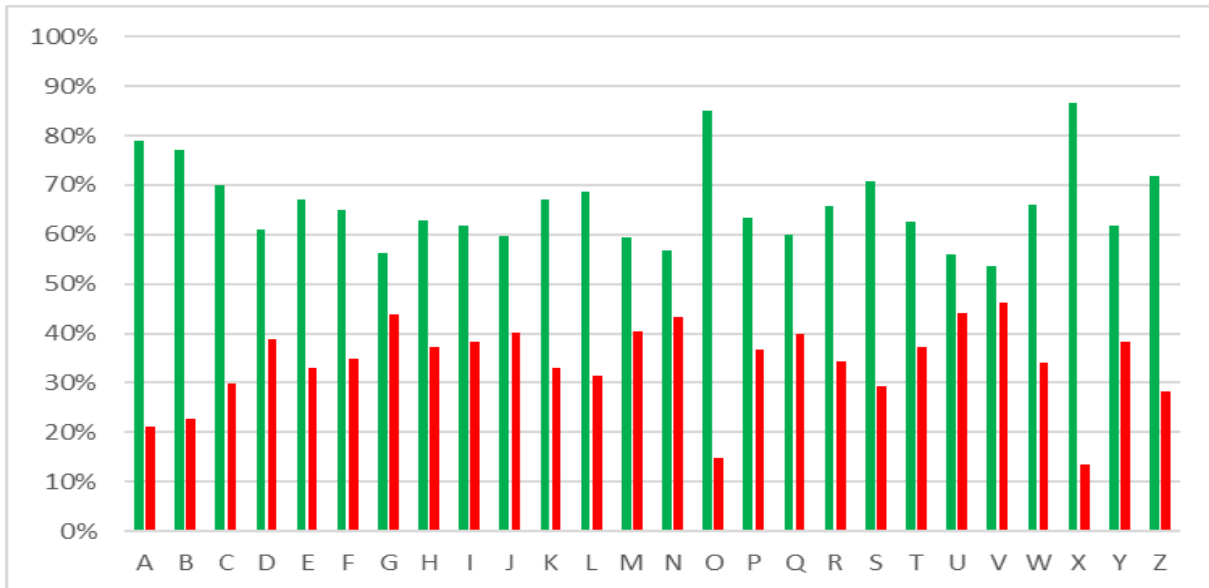
READINESS BY AGE (n=1437)



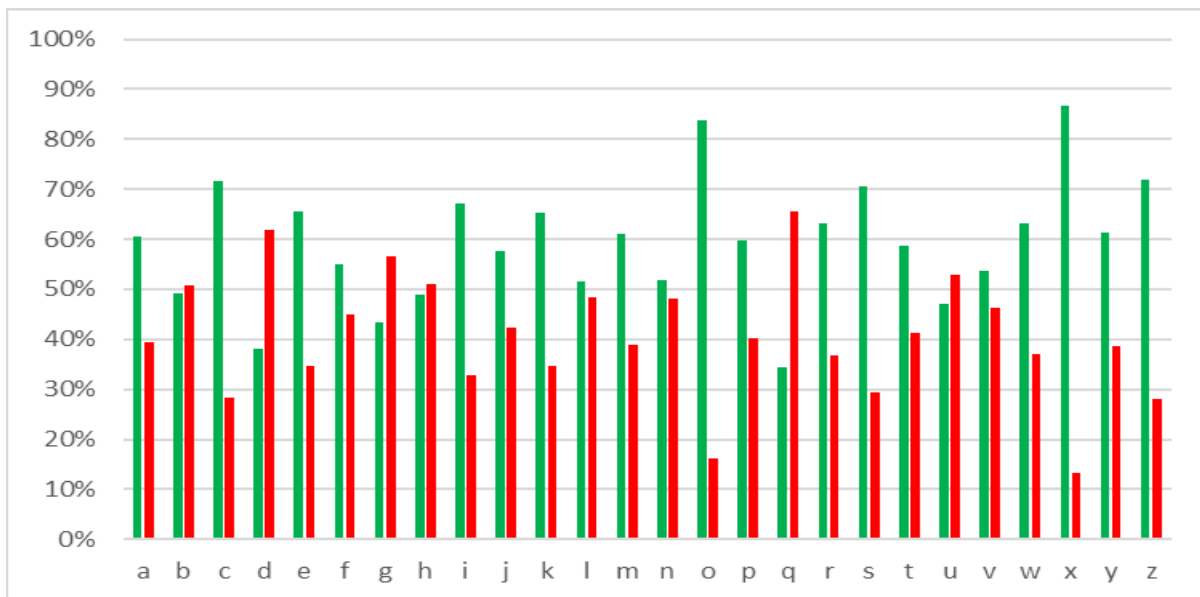
READINESS BY PARENT EDUCATION LEVEL (n=1189)



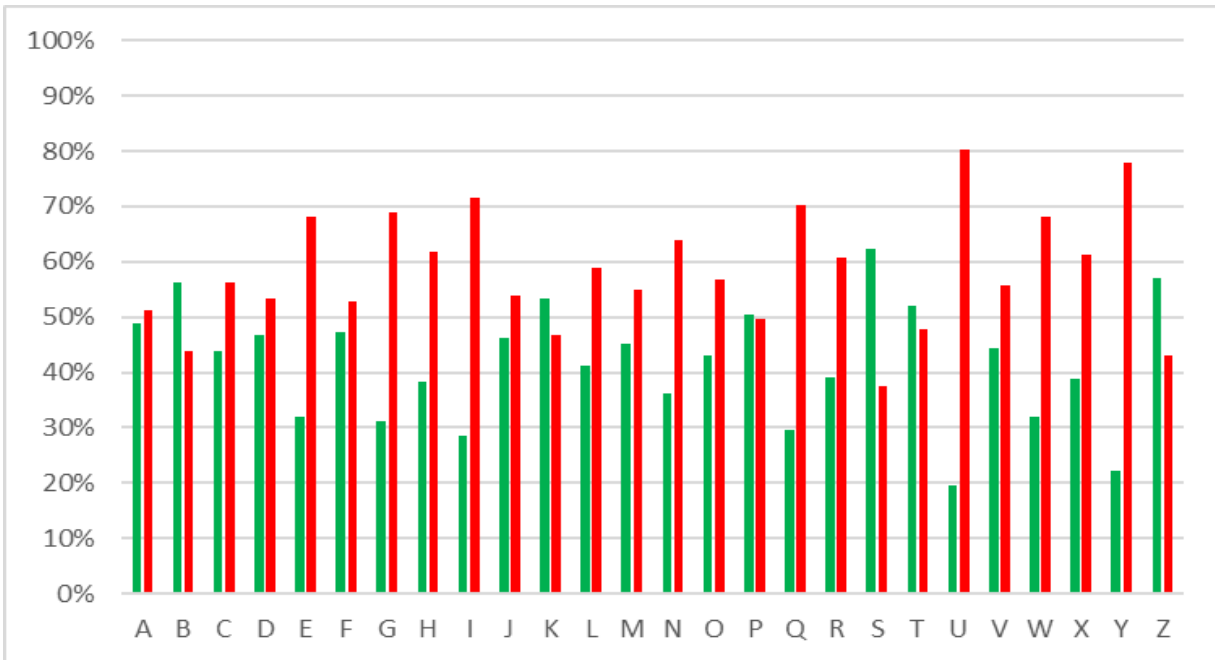
UPPER CASE LETTER RECOGNITION (n=1449)



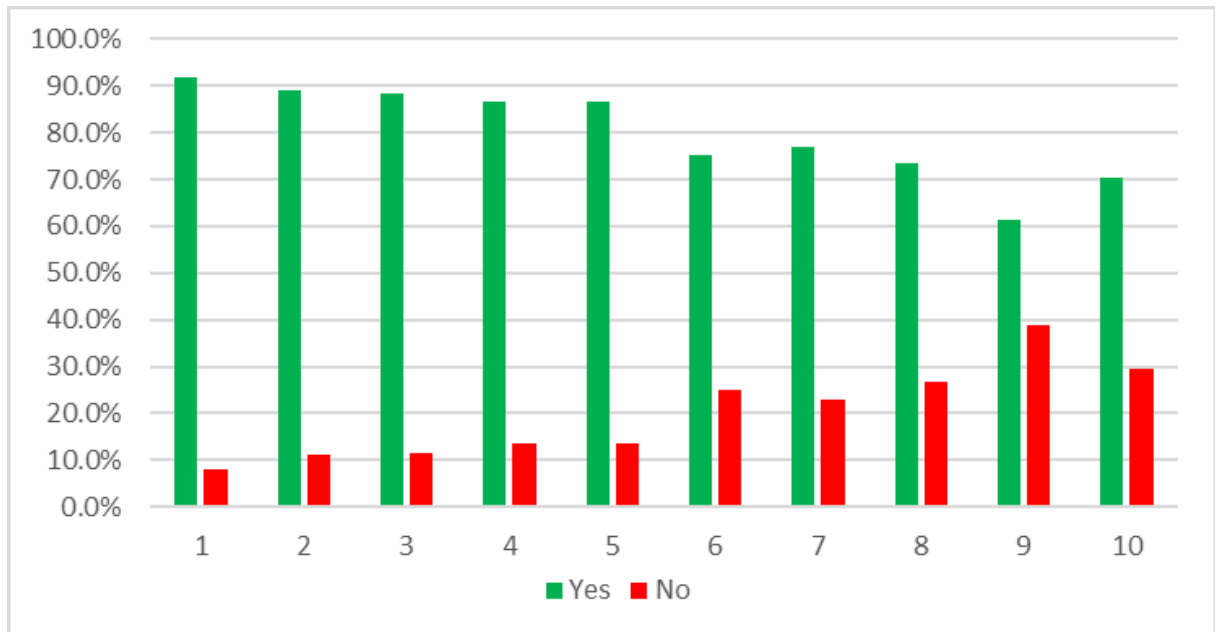
LOWER CASE LETTER RECOGNITION (n=1449)

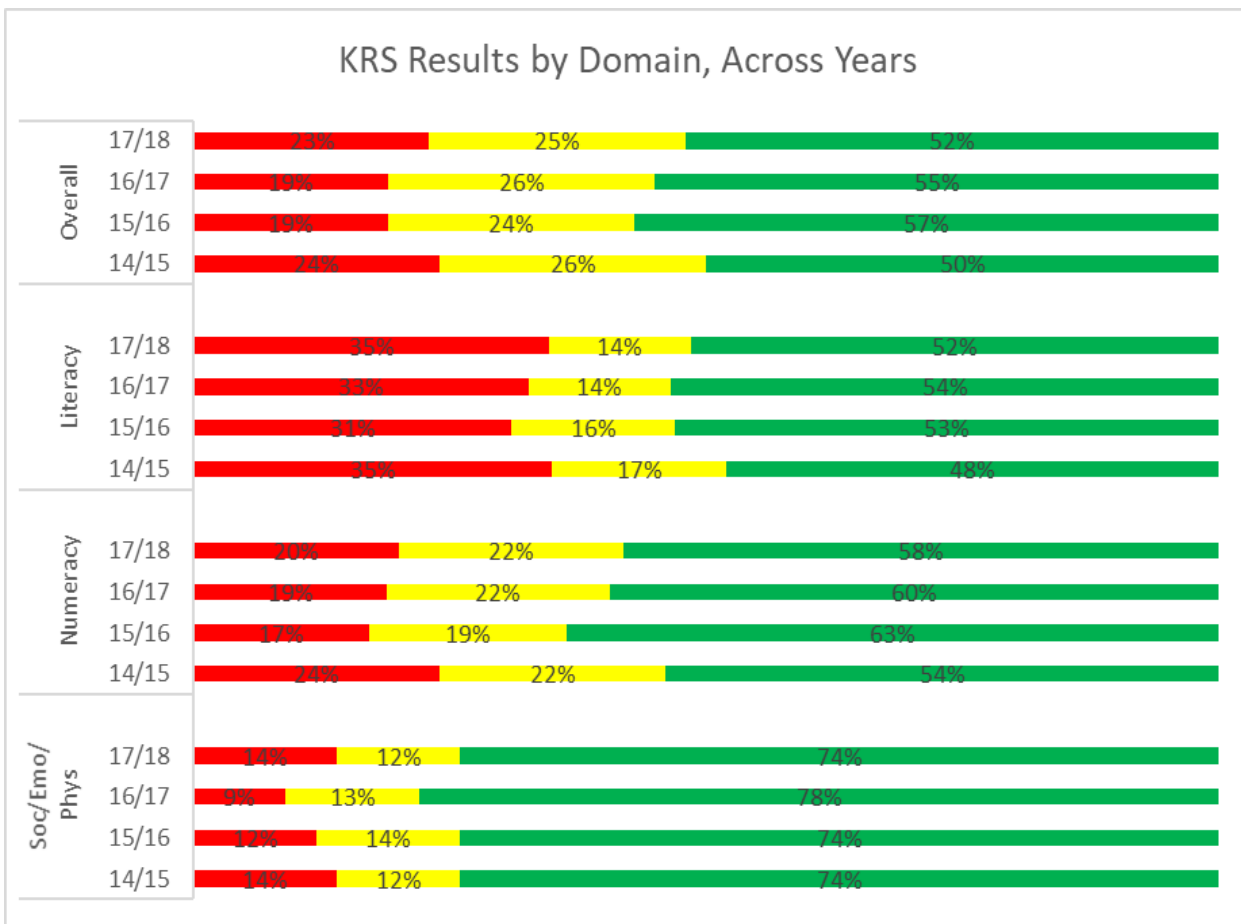
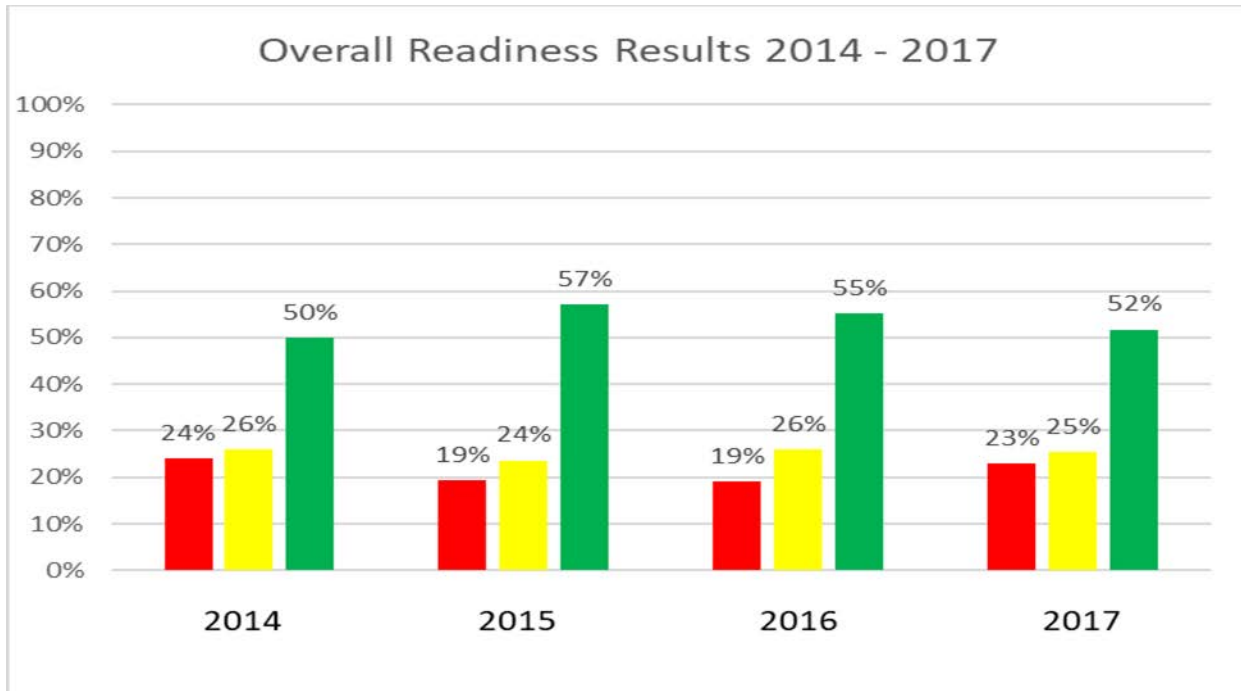


LETTER SOUNDS RECOGNITION (n=1449)

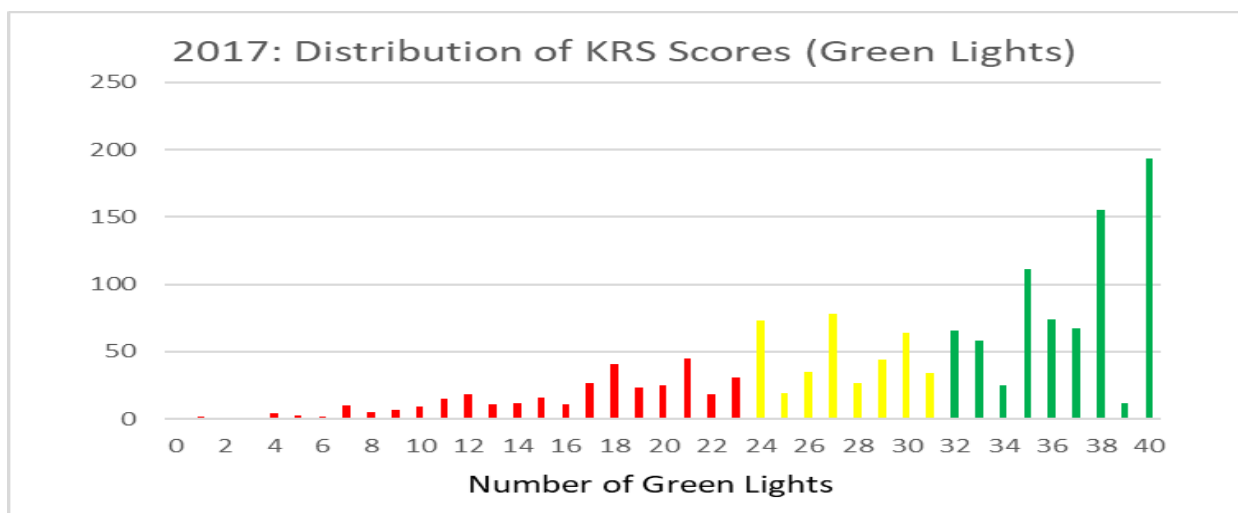
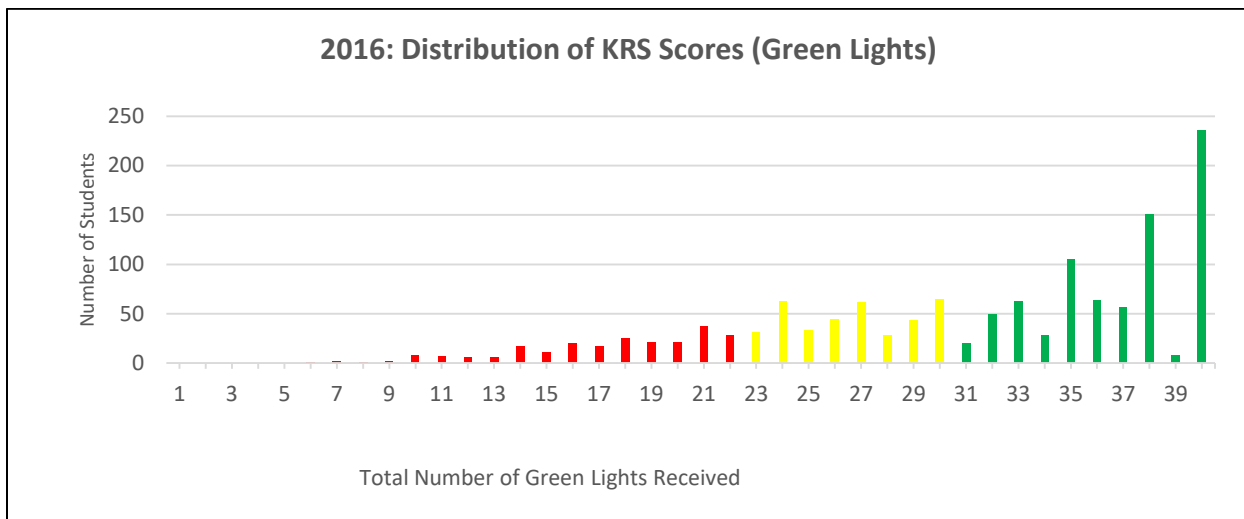
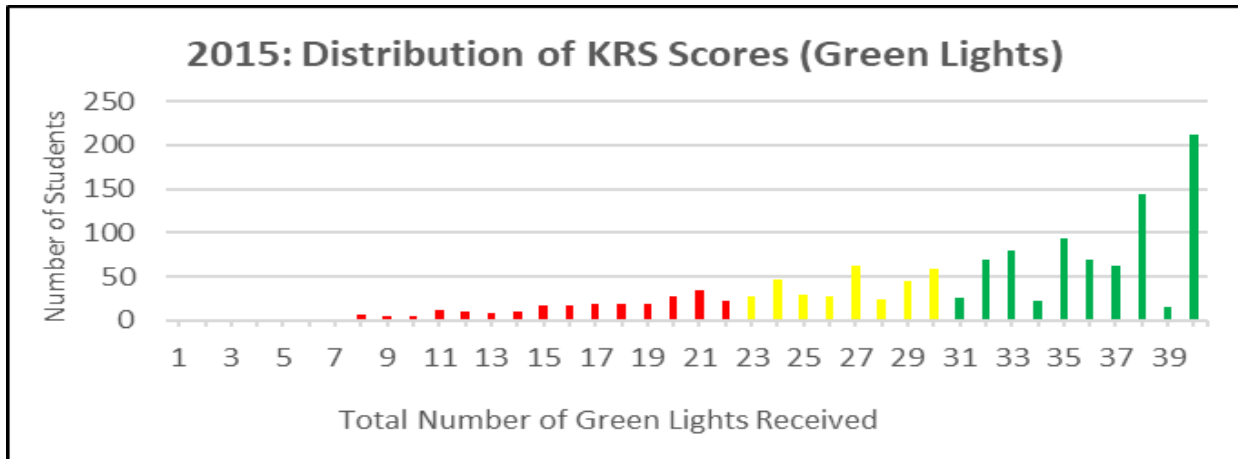


NUMBER RECOGNITION (n=1436)





Year Over Year Comparison 2015 – 2017



SHASTA COUNTY ORAL READING FLUENCY (ORF) RESULTS 2014 TO 2017. (Data from SCOE)

